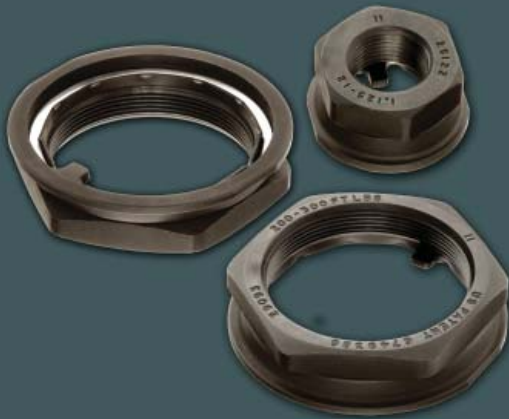
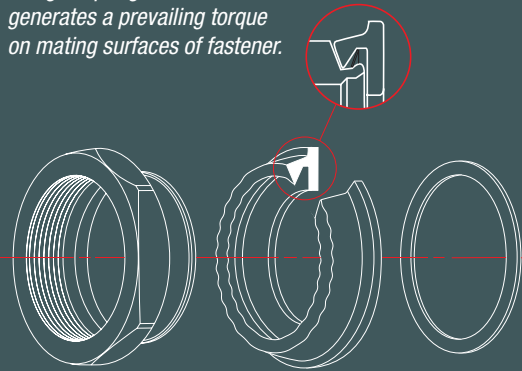


Spindlelok™

One-piece spindle lock nut

Swaged spring stock on rear generates a prevailing torque on mating surfaces of fastener.



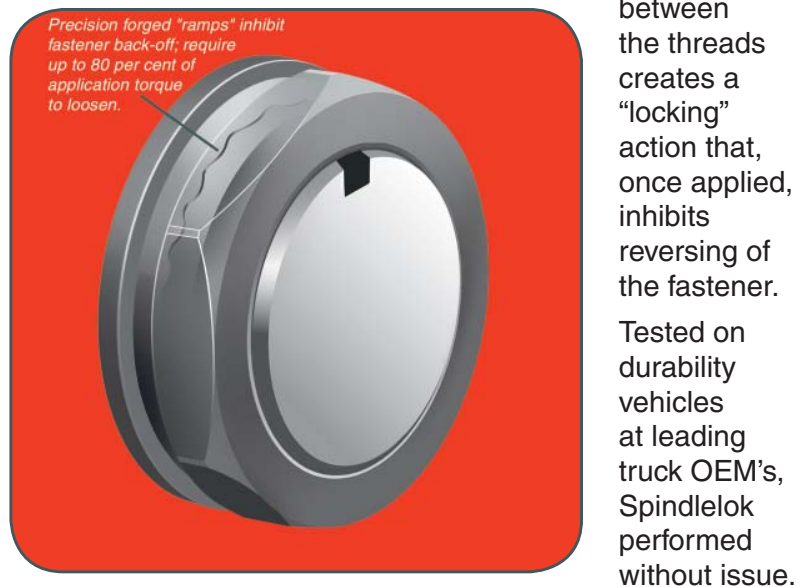
- Simple, fast installation
- Withstands aggressive torque values of Pre-Set® and similar hubs
- Manganese Phosphate coating extends corrosion-protection
- One-piece design enhances vehicle reliability

Innovative spindle lock nut from MacLean Vehicle Systems.

Spindlelok™ is a one-piece spindle lock nut for Unitized and Pre-Set® hubs.

Based on design concepts for Securex®, the revolutionary fastener that led the industry-wide conversion to hub-piloted wheels, Spindlelok combines a flexible washer staked to a precision fastener, creating the only one-piece design for spindle nuts. No extra parts or screws to lose, break or forget to install.

More than that, precision forged “ramps” on the washer and fastener mating surfaces that are equal to the clearance



between the threads creates a “locking” action that, once applied, inhibits reversing of the fastener. Tested on durability vehicles at leading truck OEM’s, Spindlelok performed without issue.

In laboratory testing, 75% to 80% of the application torque was required to reverse the fastener over the first “ramp”. Clearing the next ramp required similar force.

Manufacturers of Unitized and Pre-Set® hubs and the vehicles employing them are recommending aggressive torque be applied to the spindle nuts – 300, 400, even as high as 700 foot/pounds. Spindlelok’s robust design and precision manufacturing ensures their repeated use over the life of the vehicle.

MacLean Vehicle Systems
MVS®
A MacLean-Fogg Company

For the full story on Spindlelok™ wheel nuts that “lock” the nut to the hub, and how their use can save your fleet (or manufacturing operation) significant dollars, log on to www.mfmvs.com, call us at 1-800-323-4536 or contact your MVS sales representative.

Spindlelok™

One-piece spindle lock nut

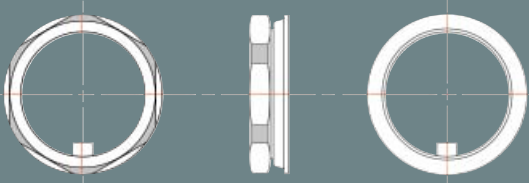
Features

- + Fast Assembly – just torque Spindlelok to recommended spec.
- + Robust design - heat treated with protective Manganese Phosphate coating.
- + One-piece, not three separate parts
- + Simple installation – no training or special tools required.

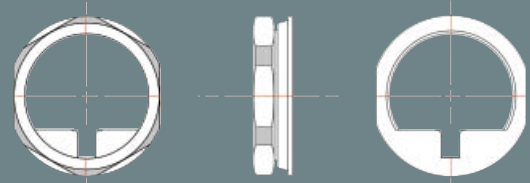
Benefits

- + Reduces assembly time or maintenance downtime; lowers cost.
- + Enhances product reliability; lowers maintenance costs.
- + Reduces installation time and inventory costs by a factor of three!
- + Lowers installation time and operating costs

Tab Style



D-Flat Style



Spindlelok Sizes

Cat. No.	Size	Coating	Style
29122	1.125-12	5540	Tab
29091	1.500-18	5540	Tab
29092	1.500-12	5540	D-Flat
29093	3.250-12	5540	Tab